

WATER PROTEC

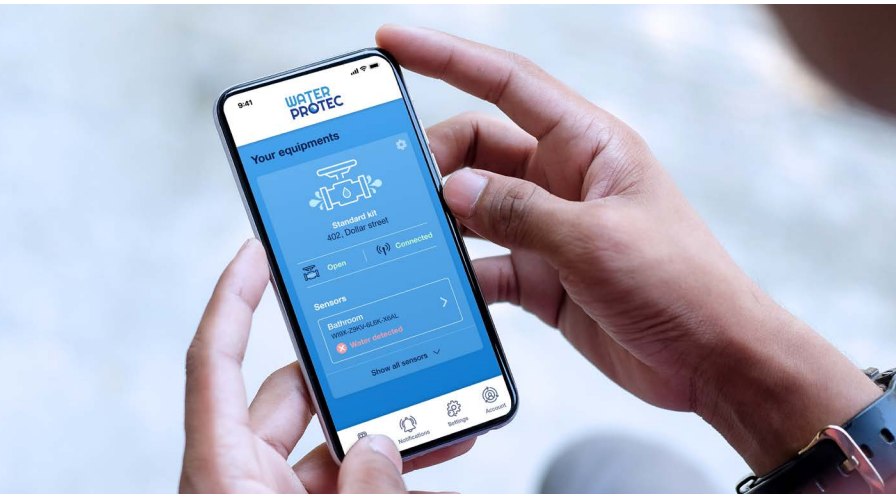


PRO-WIRED

PRODUCT SPEC SHEET

Pro-Wired is a smart, hardwired system that integrates directly into the building's structure to provide permanent, discreet protection with no manual intervention required. It offers continuous prevention against water damage while simplifying operations for property managers and developers.

**PROTECT WHAT MATTERS
WITH WATER-PROTEC**



SMART FEATURES

- + Continuous electrical operation – no batteries to replace.
- + Remote control via web platform and mobile app.
- + Visual and audible alerts triggered by leak detection.
- + Real-time monitoring of sensor and valve status.
- + Supports up to 8 independent zones with a single control panel.



POWER & BACKUP

The system is powered continuously by the building's electrical supply, eliminating the need for charging or battery replacement. An integrated backup battery provides up to 3 days of autonomy during a power outage, ensuring uninterrupted protection.



Ready to protect your project from water damage?
water-protec.com | canada@water-protec.com



CONNECTIVITY & COMMUNICATION

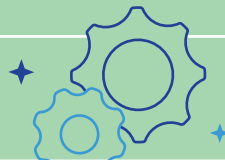
Each detection module is hardwired to the control panel for instant and reliable communication. The system is managed remotely via a mobile app and web platform, offering live monitoring, event history, and SMS or email alerts—with no recurring fees.



A DURABLE, HIGH-PERFORMANCE CHOICE

- + Components made from recycled materials.
- + FSC-certified and recyclable packaging.
- + Designed and assembled in Canada.
- + No monthly fees for access to the management platform.

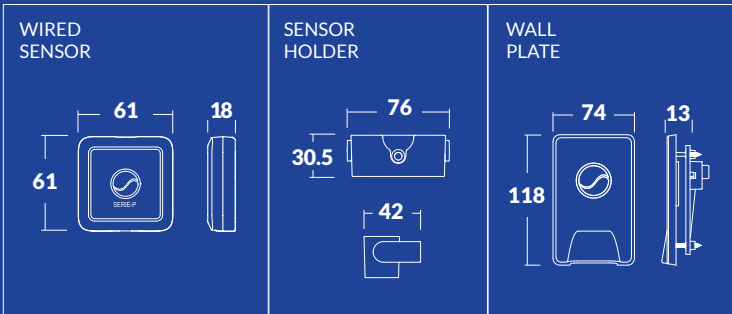
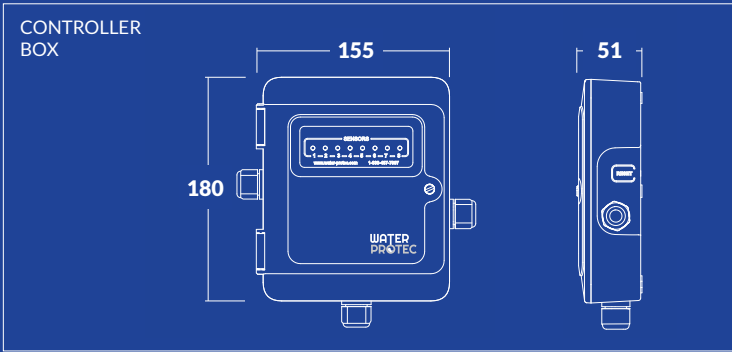
**BUILT TO LAST.
MAINTENANCE-FREE.**



PRO-CABLED SYSTEM COMPONENTS

- + 1 smart control panel.
- + Custom-configured wired sensors.
- + Integrated detection plates.
- + 1 backup battery. (3 to 4 days of autonomy)
- + 1 stainless steel electronic valve (up to 2 valves per controller), Intertek-ETL tested and CSA 125.3 certified. (Compatible with pipes up to 8 inches)

DIMENSIONS (in mm)



TECHNICAL SPECIFICATIONS

GENERAL

Maximum number of sensors / wireless sensors	8
System display	LED
Languages	French, English

COMMUNICATION/NOTIFICATIONS

Wi-Fi protocols	802.11 b/g/n
Wi-Fi encryption	WEP, WPA, WPA2
Ethernet	10/100Mbps RJ45 Connector / DHCP mode

ELECTRICAL

Operating voltage	15 VDC @ 2 Amps
Power supply input	120 VAC, 60Hz,
Output voltage (Valve)	2 x 12VDC 1 Amp
Power cable length	3 feet
Protection level	III
Control action	Type 1.B
Control function	Class A

ENVIRONMENT

Storage temperature	-4 °F~122 °F (-20 °C~50 °C)
Operating temperature	32 °F~104 °F (0 °C~40 °C)
Protection rating	(IP) IPX0
Pollution degree	2

WIRED SENSOR

Operating Voltage	3VDC
Connectivity	3 wires 18-24 gauge 1: 3VDC 2: alarm 3: IOK

APPROVALS

Stainless steel valve tested by Intertek-ETL and compliant with CSA standards (125.3)

System communication via radio frequency (915 MHz) approved by FCC - Industry Canada - IC

 PREVCAN MEMBER

WIRING DIAGRAM

